

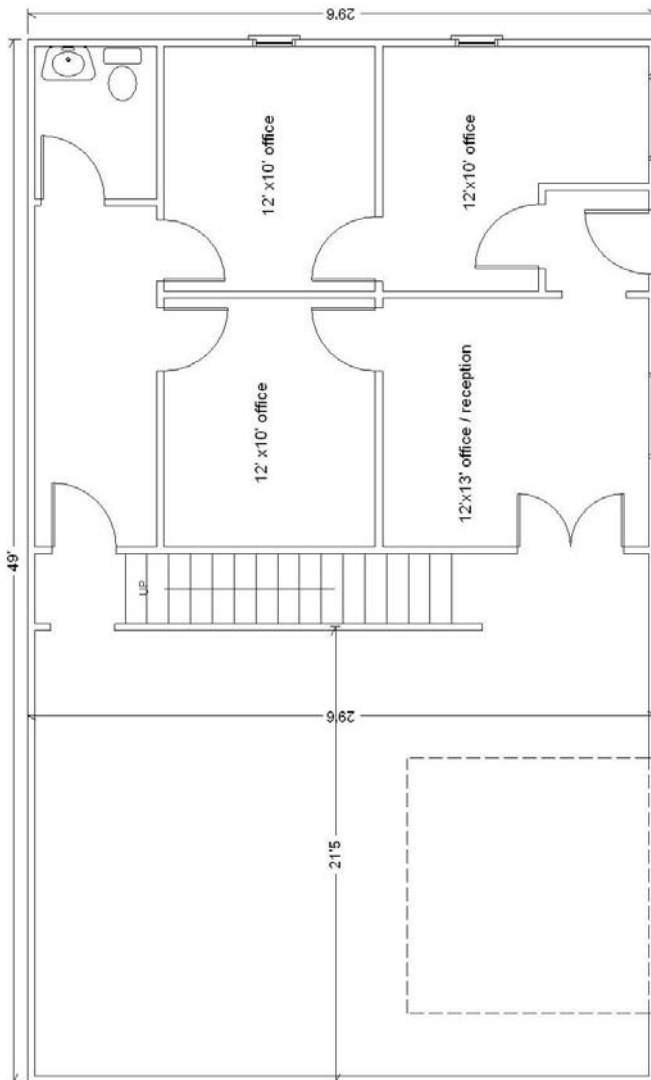
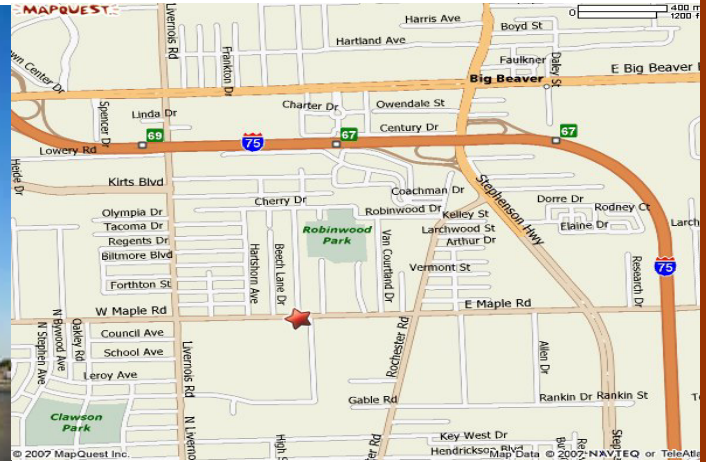
# Maplewood Court

330 and 360 E. Maple Rd.

Troy, MI 48083

(248) 585-6200

BROKERS WELCOME AND PROTECTED



**330 E. Maple Rd.  
Suite H  
1,450 Square Foot  
Ground Floor**

**Lease Rate: \$1,200 / month  
Security Deposit: \$1,200  
Office Square Footage: 725sf  
Warehouse Square Footage: 725sf  
Finished Mezzanine Square  
Footage: 725sf**

**Tenant pays:**

**Gas and Electricity  
Trash Removal - \$24/month  
Snow Removal: \$6 / service  
(approx. \$200 / season)**

**Landlord Pays:**

**Property Taxes  
Property Insurance  
Water and Sewer  
Driveway Repair and Maint.**