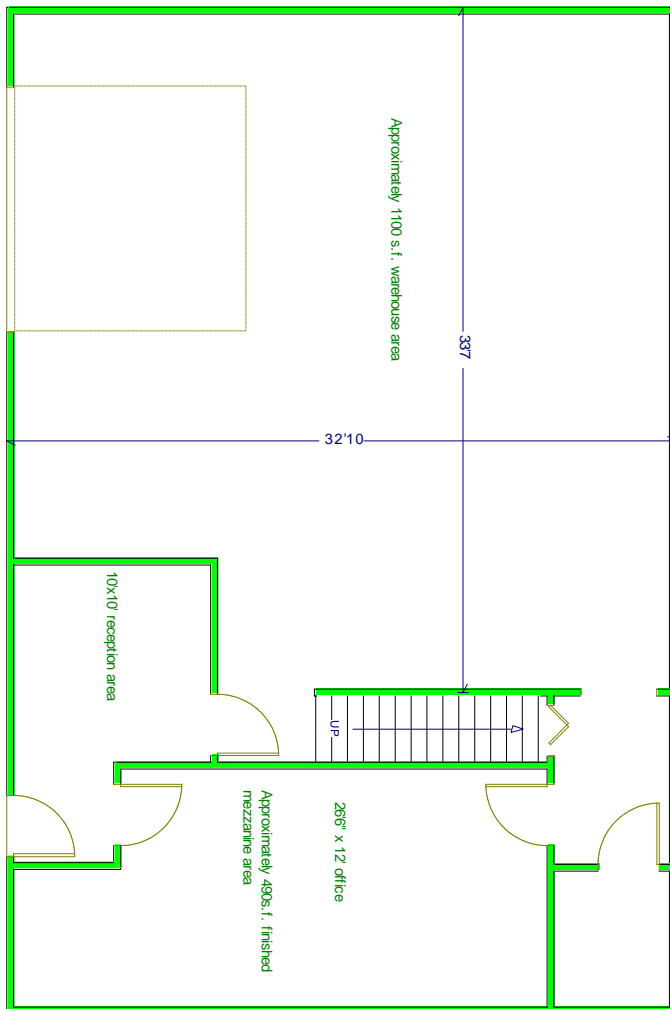
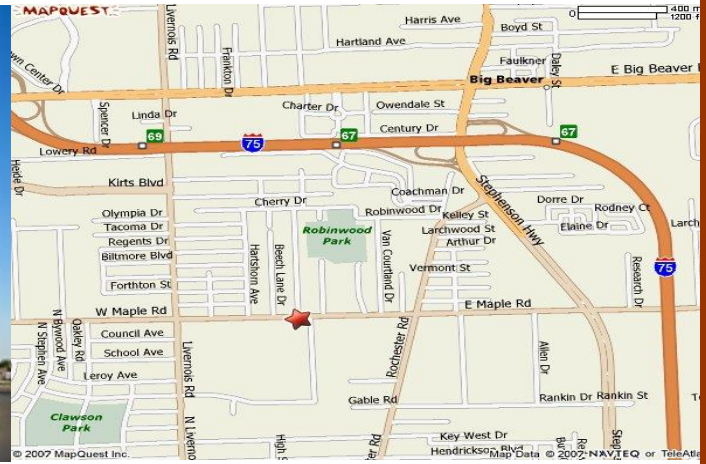


# Maplewood Court

330 and 360 E. Maple Rd.  
Troy, MI 48083  
(248) 688-9666

**BROKERS WELCOME AND PROTECTED**



## 330 E. Maple Rd. Suite F 1,600 Square Foot Ground Floor

**Lease Rate: \$1,300 / month**  
**Security Deposit: \$1,300**  
**Office Square Footage: 400 sf**  
**Warehouse Square Footage: 1,100 sf**  
**Mezzanine Square Footage: 490 sf**

**Tenant pays:**  
**Gas and Electricity**  
**Trash Removal - \$24/month**  
**Snow Removal: \$6 / service**  
**(approx. \$200 / season)**

**Landlord Pays:**  
**Property Taxes**  
**Property Insurance**  
**Water and Sewer**  
**Driveway Repair and Maint.**  
**Landscape Maintenance**